

Part number:

HYDROMA

HYDRAULICKÉ SYSTÉMY

**HIDROMA
SYSTEMS**

UKŁADY HYDRAULICZNE

HYDROMA

ГИДРАВЛИЧЕСКИЕ СИСТЕМЫ

**POMPE GRUPPO
PUMPS GROUP**

4

Standard

**Flangia e coperchio in Ghisa
Flange and cover in Cast iron**

Dati tecnici / Technical data

Grandezza Size	Cilindrata Displacement [cm ³ /rev] (in ³ /rev)	Pressione max. d'esercizio Max. working pressure			Velocità max. Max. speed [g/min] (rpm)	Portata max. Max. flow [l/min] (Gal/min)	Velocità min. Min. speed [g/min] (rpm)	Portata min. Min. flow [l/min] (Gal/min)	Dimensioni Dimensions		Massa Mass [Kg] (lbs)	Rendimento volumetrico min. Min. volumetric efficiency %
		P1	P2	P3					A	B		
		[bar] (PSI)	[bar] (PSI)	[bar] (PSI)					[mm] (inch)	[mm] (inch)		
4SP G60	60.3 (3.68)	190 (2755)	210 (3045)	220 (3190)	2300	138.7 (36.64)	800	45.82 (12.11)	88.6 (3.488)	176.2 (6.937)	22.2 (49.0)	92*
4SP G70	69 (4.21)	180 (2610)	200 (2900)	210 (3045)	2200	151.8 (40.11)	800	52.44 (13.85)	90.6 (3.567)	180.2 (7.094)	22.7 (49.9)	
4SP G86	86 (5.25)	180 (2610)	200 (2900)	210 (3045)	2200	189.2 (49.99)	800	65.36 (17.27)	94.6 (3.724)	188.2 (7.409)	23.5 (51.8)	
4SP G103	103 (6.29)	170 (2465)	190 (2755)	200 (2900)	2000	206 (54.43)	800	78.28 (20.68)	98.6 (3.882)	196.2 (7.724)	24.3 (53.6)	
4SP G120	120 (7.32)	150 (2175)	160 (2320)	180 (2610)	2000	240 (63.41)	800	91.2 (24.10)	102.6 (4.039)	204.2 (8.039)	25.0 (55.1)	

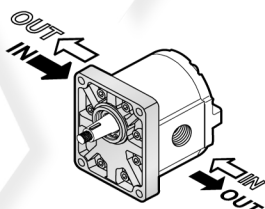
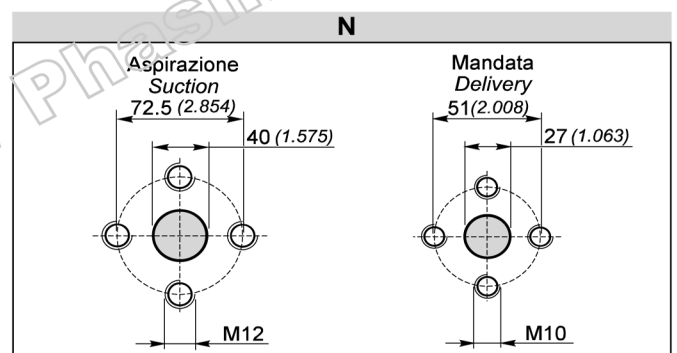
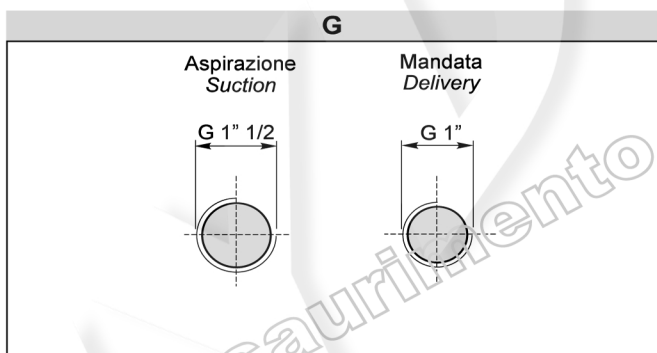
* (Valori rilevati in fase di collaudo a 1500 giri/min / Value collected during the testing at 1500 rpm)

Esempio di ordinazione in codice / Example of ordering code

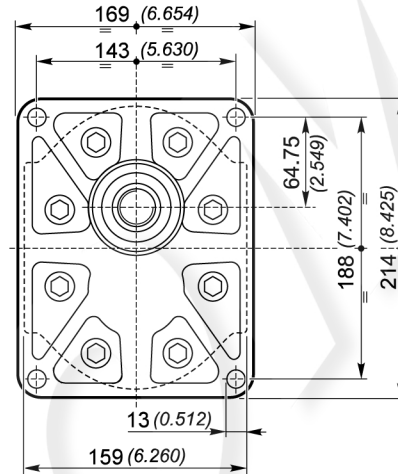
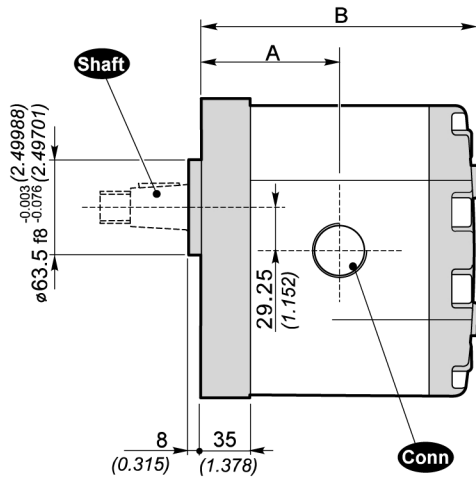
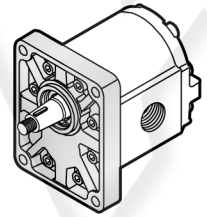
4SP | G | 60 | D | - | 10 | N | (VT)

4SP	Tipo pompa / Pump type	vedi tabella / see table
G	Flangia e coperchio / Flange and cover	G = Ghisa / Cast iron
60	Cilindrata / Displacement	vedi tabella / see table
D	Rotazione destra / Clockwise rotation	D = Rotazione destra / Clockwise rotation S = Rotazione sinistra / Anticlockwise rotation
10	Tipo albero / Shaft type	10
G	Tipo connessioni / Connections type	G - N
(VT)	Opzioni / Optional	(VT) Guarnizione in Viton (a richiesta) Viton seals (optional)

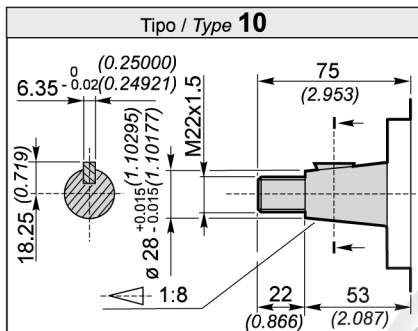
Gonn Connessioni / Connections



Rotazione / Rotation	
D	S



Shaft Alberi disponibili / Available shafts



Ad esaurimento / Phasing-out